



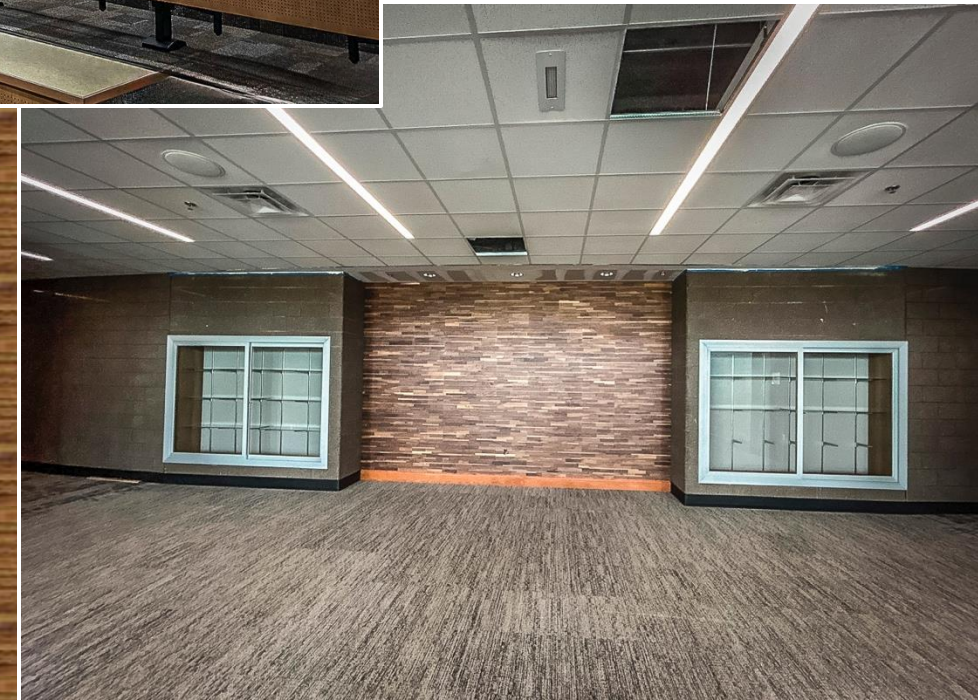
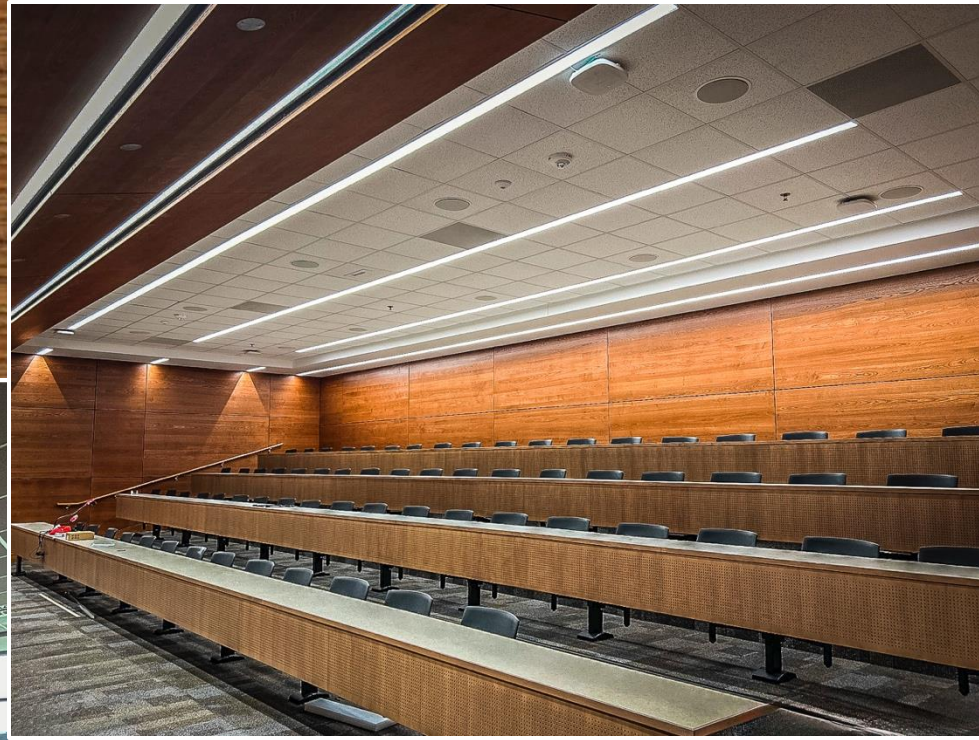
EAGLE MOUNTAIN HS



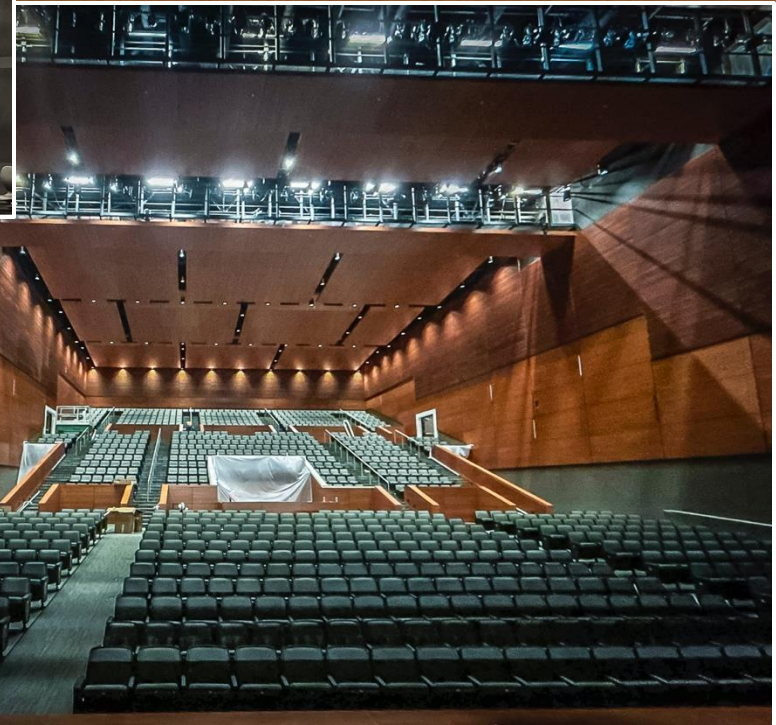
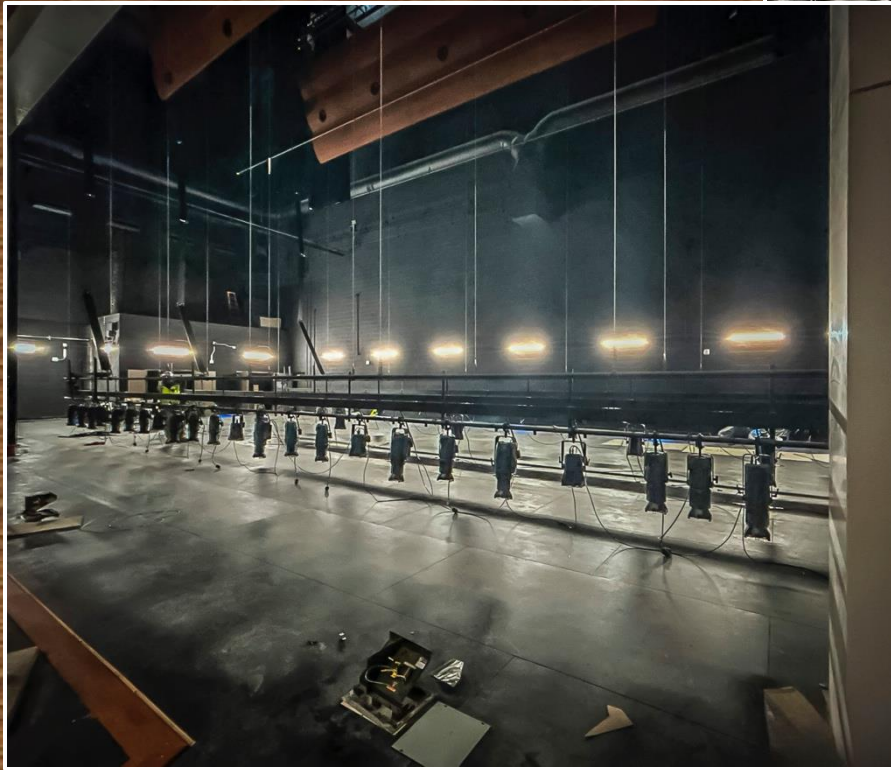
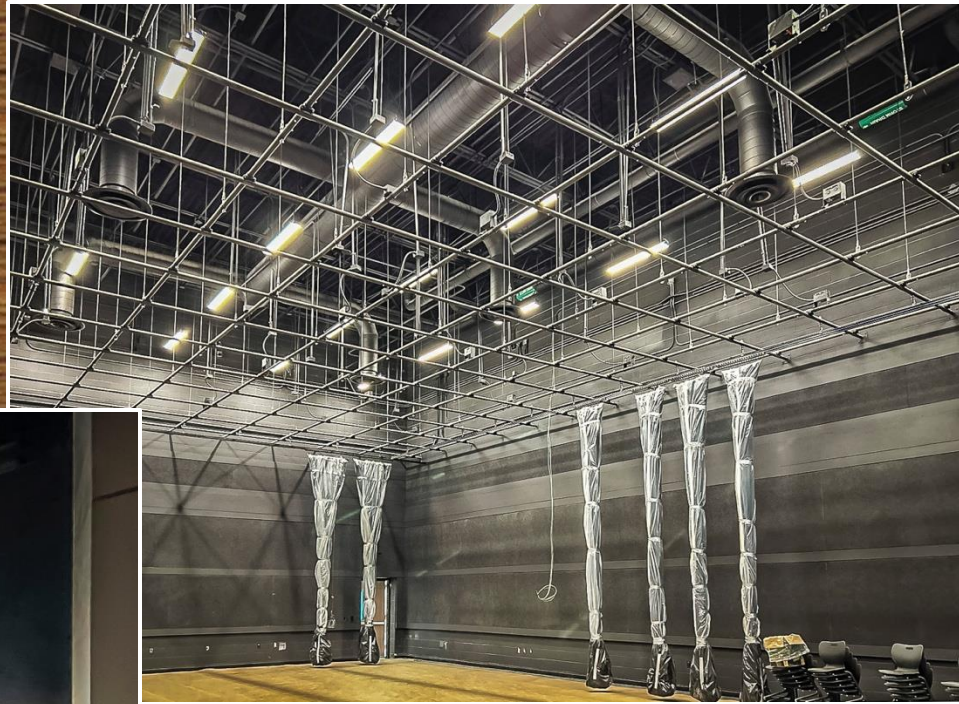
- Aerial photo of the campus looking south.



- The dry creek courtyard and stair entrances are complete.



- Photos of a typical classroom, auditorium entrance, and the small lecture hall.



- Photos show black box and stage lighting entrance in the Performing Arts Center.



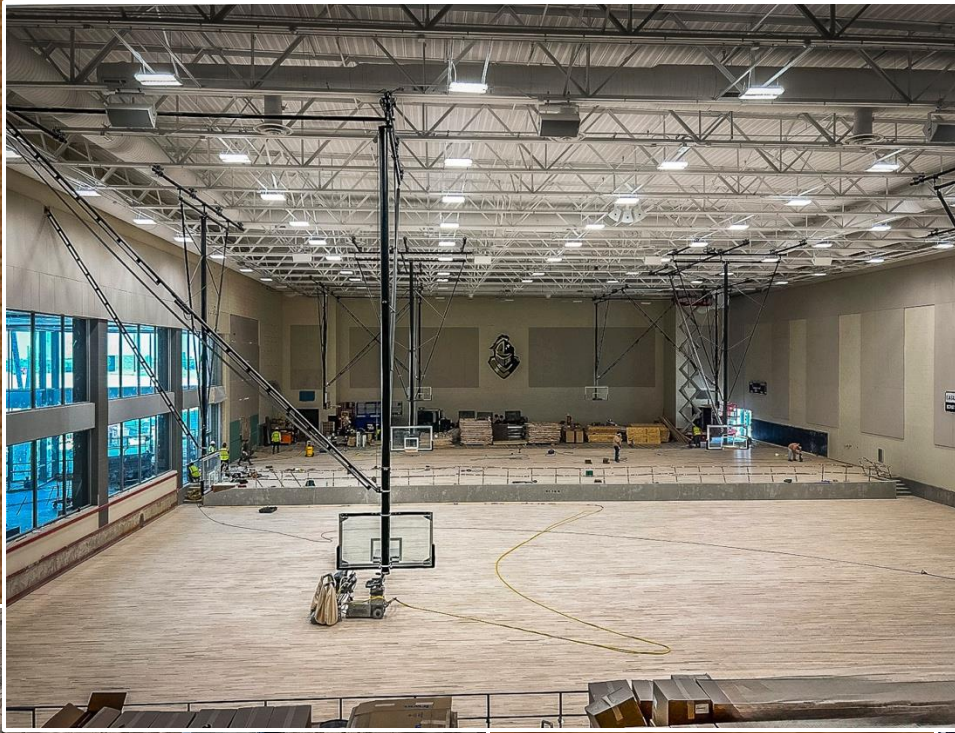
- The library, logo, and main academic corridors are complete.



- The kitchen serving line is complete and ready for students.



- Stadium press box logos have been installed.



- Gymnastics gym is complete.
- Practice gym floor has been painted and sealed.
- Competition gym wood flooring installation is in progress.



EMHS PROJECTED FINISH-OUT TIMELINE

- A staff cookout and tour were held on July 15.
- Tennis Camp began on July 15.
- Band Camp began on July 22.
- The Ribbon Cutting Ceremony is scheduled for August 1.
- The Community Pep Rally Event is scheduled for August 8.



WAYSIDE MS UPDATE



- Site grading is to begin on July 19.
- Utilities will begin in early August (pending city plans review).
- Demolition of all structures is completed, and removal of asphalt is ongoing.



SUMMER PROJECTS

CREEKVIEW MS ROOF TOP UNITS PROJECT

- All units have been installed.
- Test and balance is ongoing.
- Campus will be ready for staff on July 24.



HIGHLAND MS AND SAGINAW ES HVAC REPLACEMENT PROJECT

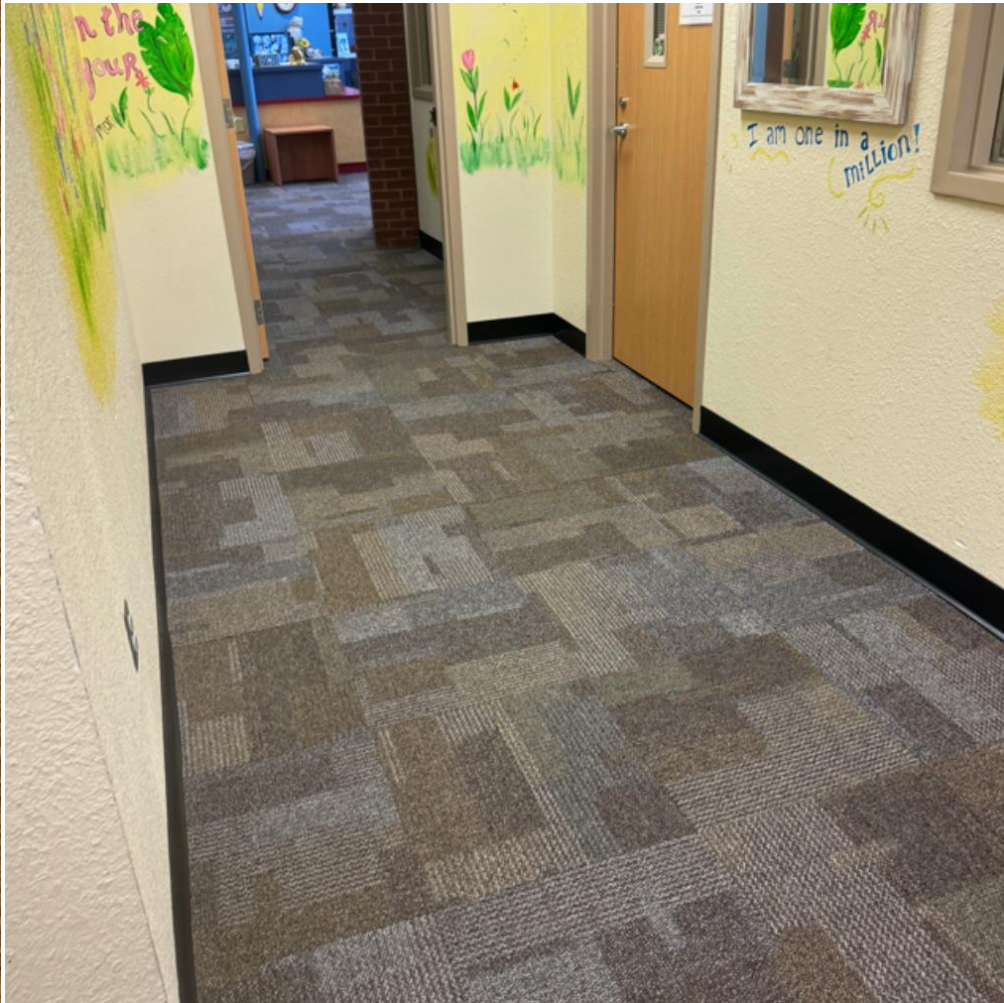


- All rooftop units have been replaced. Test and balance are ongoing. All staff were given access on July 15th.





ED WILLKIE MS AND LAKE POINTE ES CARPET REPLACEMENTS



- Carpet replacements at both campuses have been completed.



PLAYGROUND RESURFACING PROJECT



- Chisholm Ridge ES turf is complete.



- Gravel base is complete at Gililand ES.



EXTERIOR IMPROVEMENTS PROJECT

- Ed Willkie MS landscaping is complete.



- Greenfield ES decomposed granite and stone to be installed.



SAGINAW HS SHEETROCK REPAIRS



- The sheetrock repairs are complete in the main corridor.



GYM FLOOR REPLACEMENT PROJECT



- Gym floor at Comanche Springs ES is complete. Striping to start soon.



Demolition is ongoing at Remington Point ES.



TRAFFIC SIGNAL AT MARINE CREEK PARKWAY



- Traffic signal at Marine Creek Parkway and Mustang Rock work continues. Expected completion date is the end of August 2024.